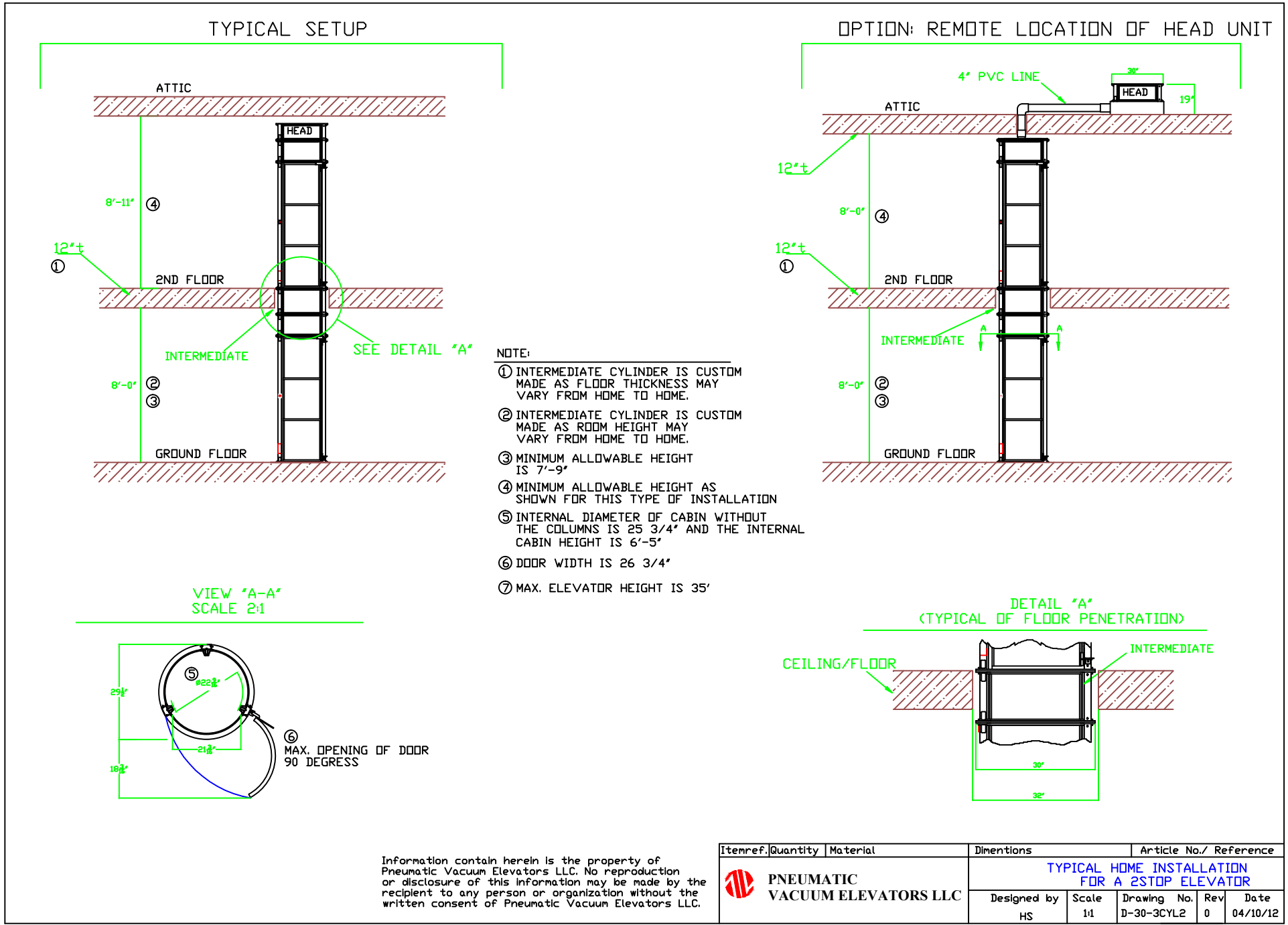


2 stop

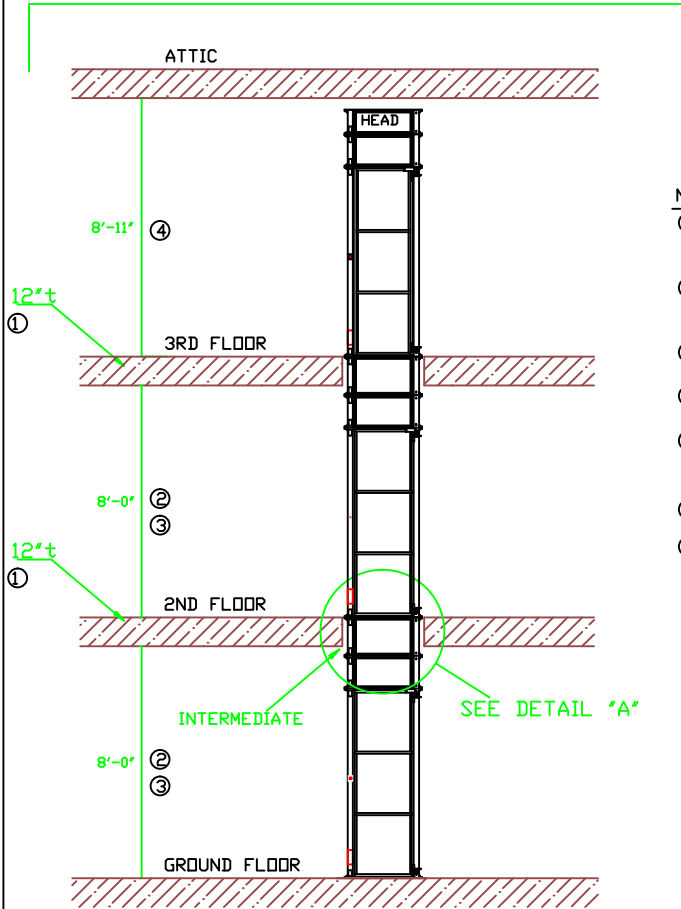


Information contain herein is the property of Pneumatic Vacuum Elevators LLC. No reproduction or disclosure of this information may be made by the recipient to any person or organization without the written consent of Pneumatic Vacuum Elevators LLC.

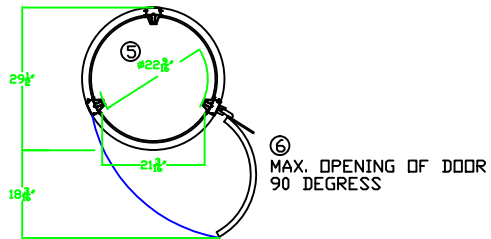
Itemref.	Quantity	Material	Dimentions	Article No./ Reference
PNEUMATIC VACUUM ELEVATORS LLC			TYPICAL HOME INSTALLATION FOR A 2STOP ELEVATOR	
			Designed by HS	Scale 1:1
			Drawing No. D-30-3CYL2	Rev 0
			Date 04/10/12	

3 Stop

TYPICAL SETUP



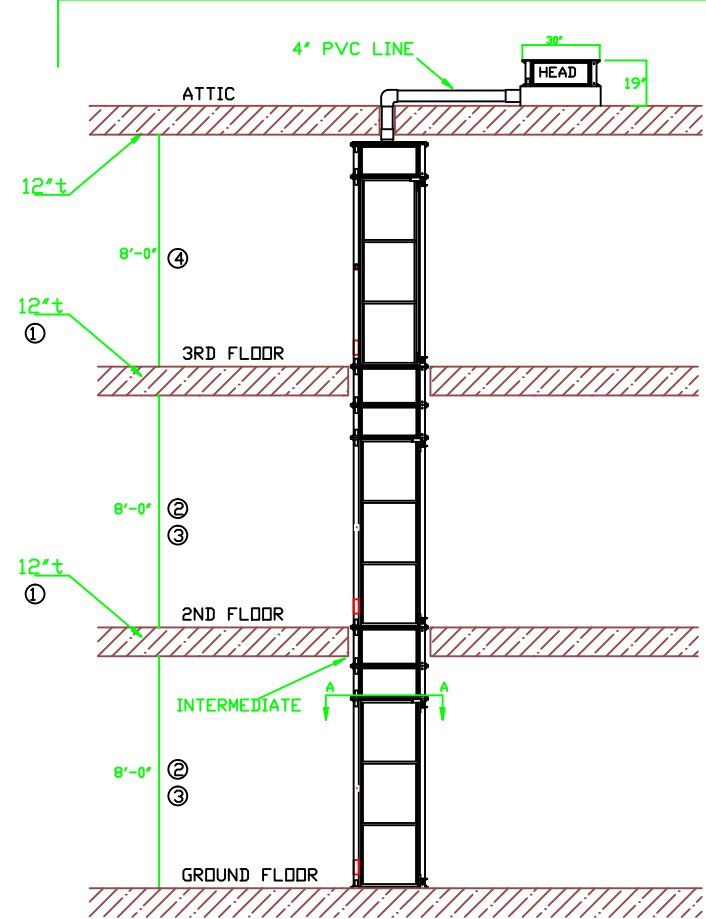
VIEW "A-A"
SCALE 2:1



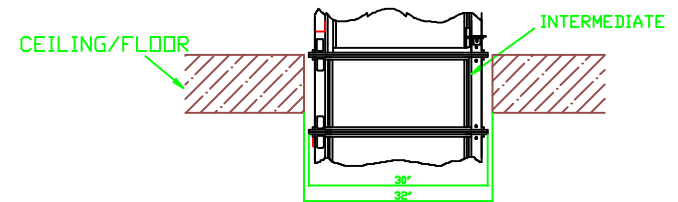
NOTE:

- ① INTERMEDIATE CYLINDER IS CUSTOM MADE AS FLOOR THICKNESS MAY VARY FROM HOME TO HOME.
- ② INTERMEDIATE CYLINDER IS CUSTOM MADE AS ROOM HEIGHT MAY VARY FROM HOME TO HOME.
- ③ MINIMUM ALLOWABLE HEIGHT IS 7'-9"
- ④ MINIMUM ALLOWABLE HEIGHT AS SHOWN FOR THIS TYPE OF INSTALLATION
- ⑤ INTERNAL DIAMETER OF CABIN WITHOUT THE COLUMNS IS 25 3/4" AND THE INTERNAL CABIN HEIGHT IS 6'-5"
- ⑥ DOOR WIDTH IS 26 3/4"
- ⑦ MAX. ELEVATOR HEIGHT IS 35'

OPTION: REMOTE LOCATION OF HEAD UNIT



DETAIL "A" (TYPICAL OF FLOOR PENETRATION)



Information contain herein is the property of Pneumatic Vacuum Elevators LLC. No reproduction or disclosure of this information may be made by the recipient to any person or organization without the written consent of Pneumatic Vacuum Elevators LLC.



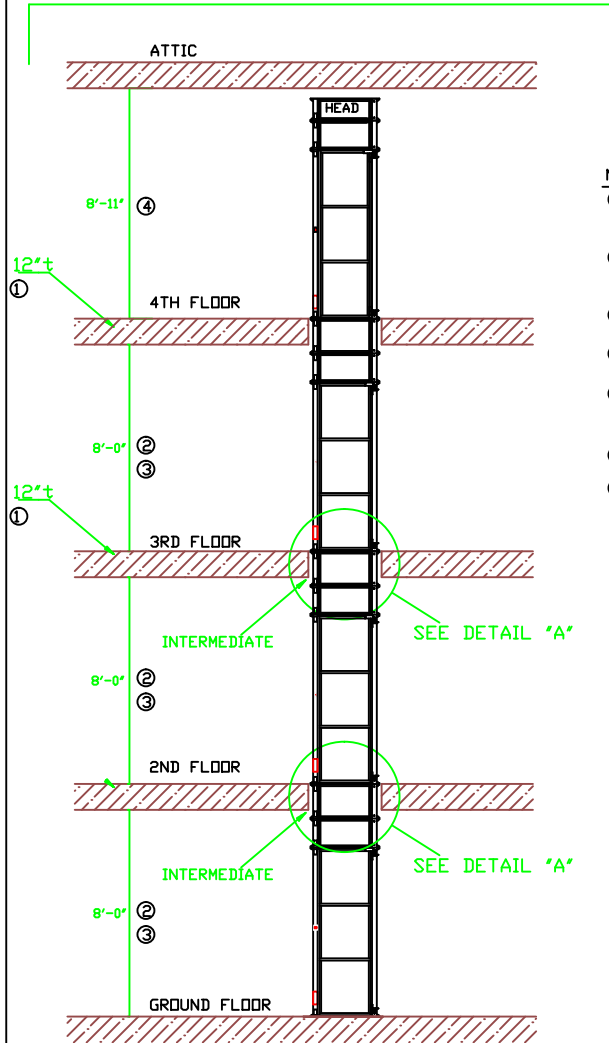
**PNEUMATIC
VACUUM ELEVATORS LLC**

TYPICAL HOME INSTALLATION FOR A 3STOP ELEVATOR

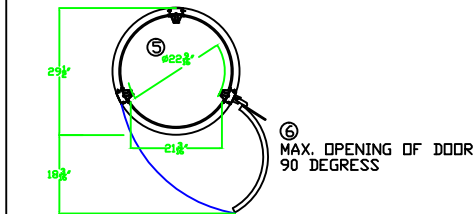
Designed by	Scale	Drawing No.	Rev	Date
HS	1:1	D-30-3CYL3	0	04/10/12

4 Stop

TYPICAL SETUP



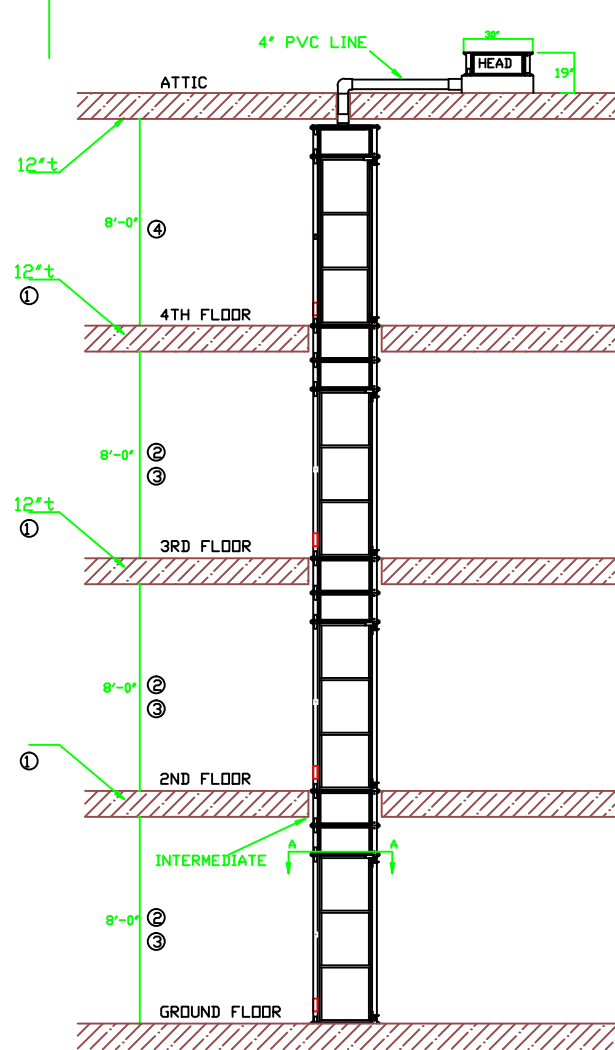
VIEW "A-A"
SCALE 2:1



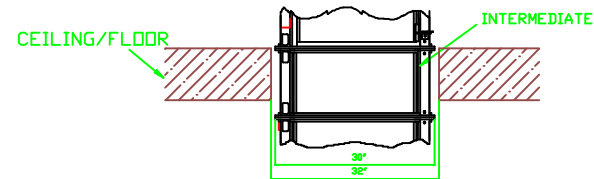
NOTE:

- ① INTERMEDIATE CYLINDER IS CUSTOM MADE AS FLOOR THICKNESS MAY VARY FROM HOME TO HOME.
- ② INTERMEDIATE CYLINDER IS CUSTOM MADE AS ROOM HEIGHT MAY VARY FROM HOME TO HOME.
- ③ MINIMUM ALLOWABLE HEIGHT IS 7'-9"
- ④ MINIMUM ALLOWABLE HEIGHT AS SHOWN FOR THIS TYPE OF INSTALLATION
- ⑤ INTERNAL DIAMETER OF CABIN WITHOUT THE COLUMNS IS 25 3/4" AND THE INTERNAL CABIN HEIGHT IS 6'-5"
- ⑥ DOOR WIDTH IS 26 3/4"
- ⑦ MAX. ELEVATOR HEIGHT IS 35'

OPTION: REMOTE LOCATION OF HEAD UNIT



DETAIL "A"
(TYPICAL OF FLOOR PENETRATION)



Information contain herein is the property of Pneumatic Vacuum Elevators LLC. No reproduction or disclosure of this information may be made by the recipient to any person or organization without the written consent of Pneumatic Vacuum Elevators LLC.

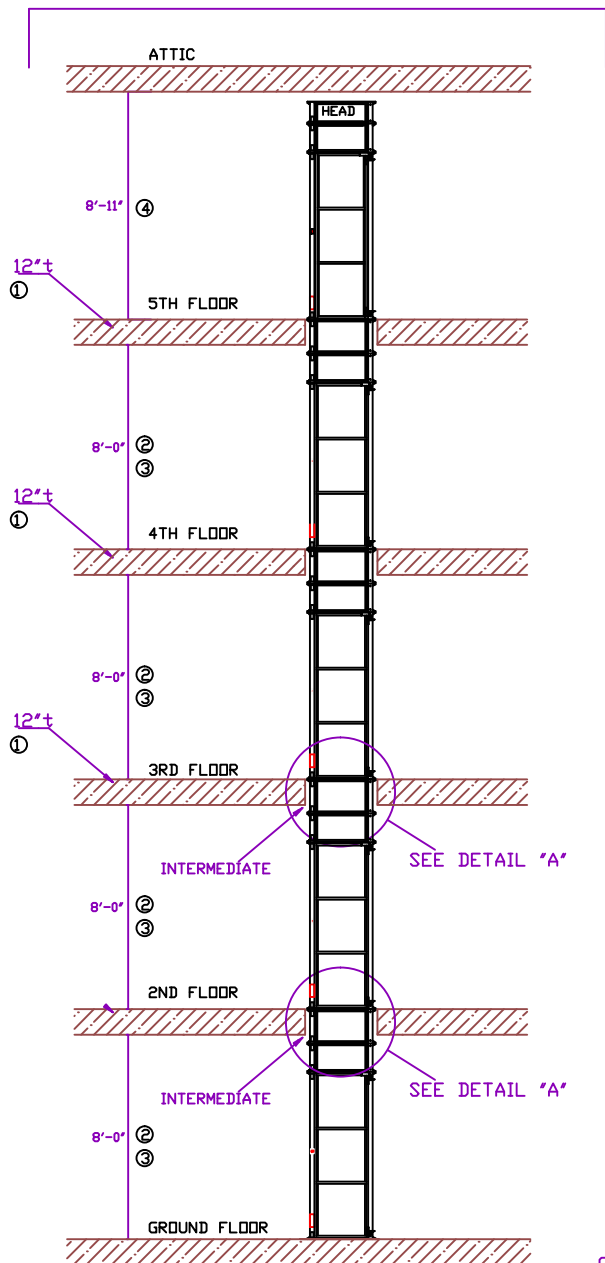
 PNEUMATIC VACUUM ELEVATORS LLC

TYPICAL HOME INSTALLATION FOR A 4STOP ELEVATOR

Designed by	Scale	Drawing No.	Rev	Date
HS	1:1	D-30-3CYL4	0	04/10/12

5 Stop

TYPICAL SETUP

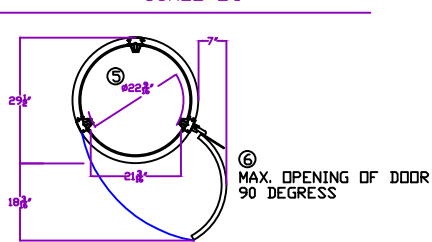


NOTE:

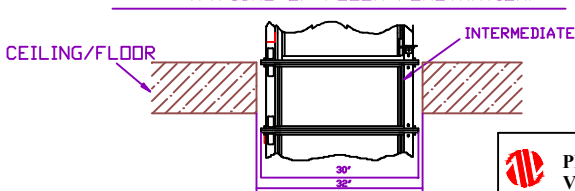
- ① INTERMEDIATE CYLINDER IS CUSTOM MADE AS FLOOR THICKNESS MAY VARY FROM HOME TO HOME.
- ② INTERMEDIATE CYLINDER IS CUSTOM MADE AS ROOM HEIGHT MAY VARY FROM HOME TO HOME.
- ③ MINIMUM ALLOWABLE HEIGHT IS 7'-9"
- ④ MINIMUM ALLOWABLE HEIGHT AS SHOWN FOR THIS TYPE OF INSTALLATION
- ⑤ INTERNAL DIAMETER OF CABIN WITHOUT THE COLUMNS IS 25 3/4" AND THE INTERNAL CABIN HEIGHT IS 6'-5"
- ⑥ DOOR WIDTH IS 26 3/4"
- ⑦ MAX. ELEVATOR HEIGHT IS 49'

Information contain herein is the property of Pneumatic Vacuum Elevators LLC. No reproduction or disclosure of this information may be made by the recipient to any person or organization without the written consent of Pneumatic Vacuum Elevators LLC.

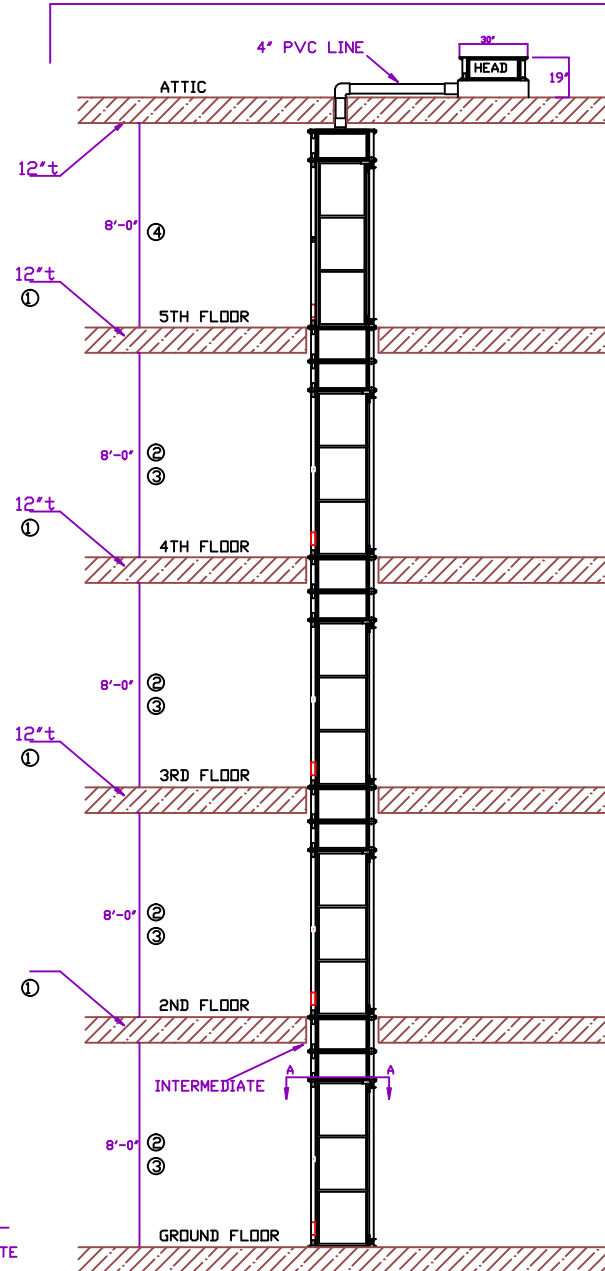
VIEW "A-A" SCALE 2:1



DETAIL "A" (TYPICAL OF FLOOR PENETRATION)



OPTION: REMOTE LOCATION OF HEAD UNIT



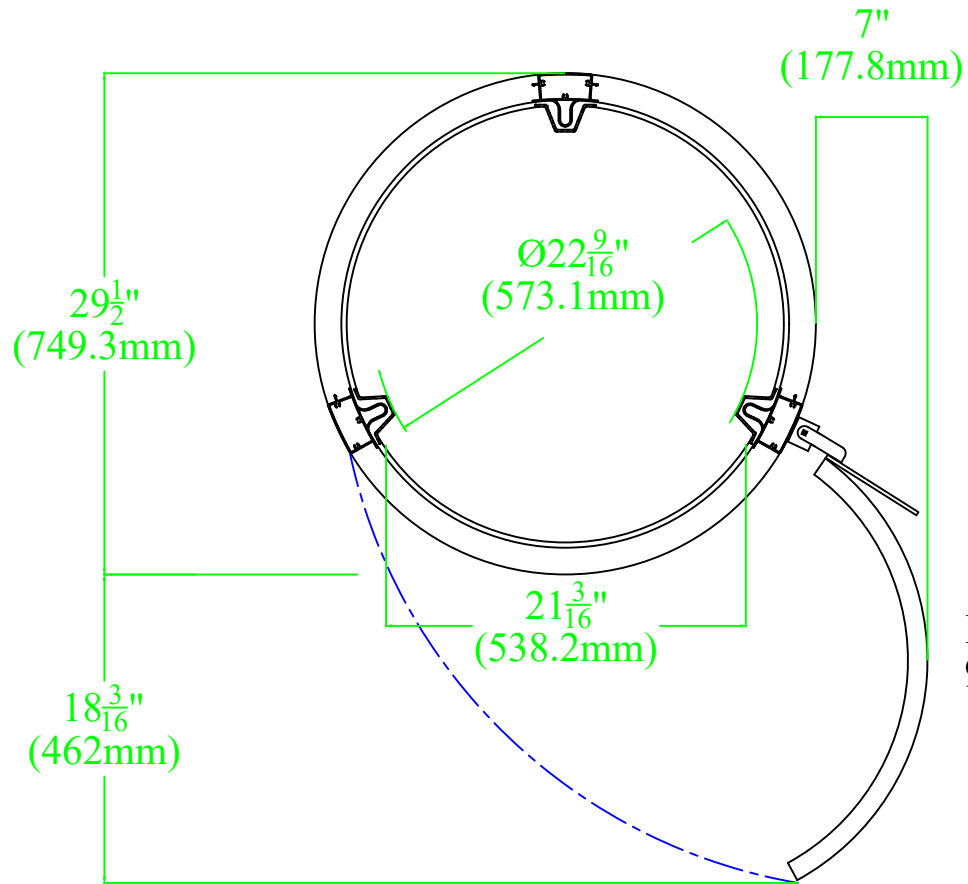
PNEUMATIC VACUUM ELEVATORS LLC

TYPICAL HOME INSTALLATION FOR A 5STOP ELEVATOR


Designed by	Scale	Drawing No.	Rev	Date
HS	1:1	D-30-3CYL5	0	03/13/15

PVE 30 -DIMENSIONS

SCALE 2:1



MAX. OPENING OF DOOR
90 DEGREES

Itemref.	Quantity	Material	Dimensions	Article No./ Reference				
 PNEUMATIC VACUUM ELEVATORS LLC	SPACE REQUIREMENT FOR MAX DOOR OPENING - MODEL PVE30			Designed by	Scale	Drawing No.	Rev	Date
	HS	2:1	D-T30-H-02	0	08/24/17			

PVE30 Technical Specifications



General:

- External cylinder diameter: 30" (762mm)
- Rated Load: 350 lbs. (158 kg)
- Speed: 30 fpm (.15 ms)
- No pit required. Bottom level floor must be 100% level as elevator rests on existing floor.
- No hoistway required.
- Minimum overhead clearance:
 - Standard Unit (turbine motors located on top): 107" (2,719mm)
 - Split Unit (turbine motors located remotely): 97" (2,464mm)
- Penetration required to install through floors and ceilings: 32" (813mm)

Mechanical Requirements

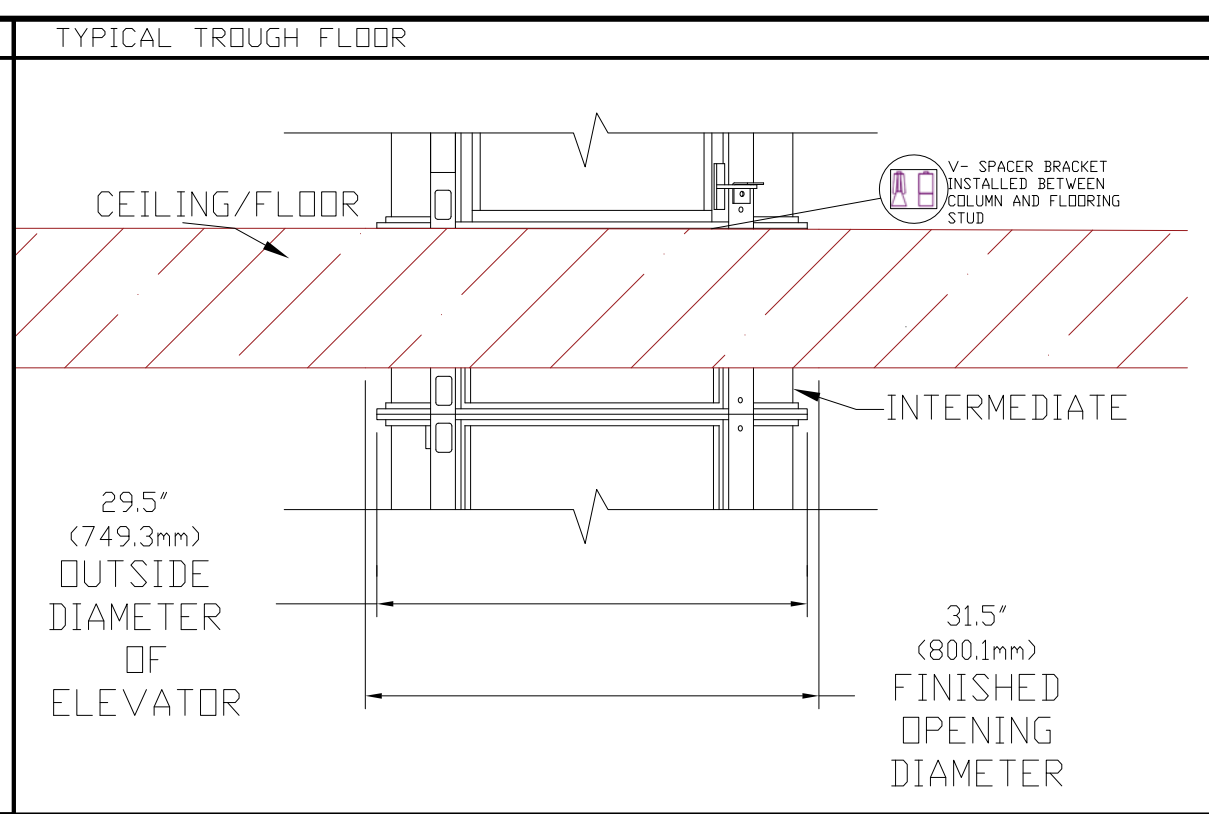
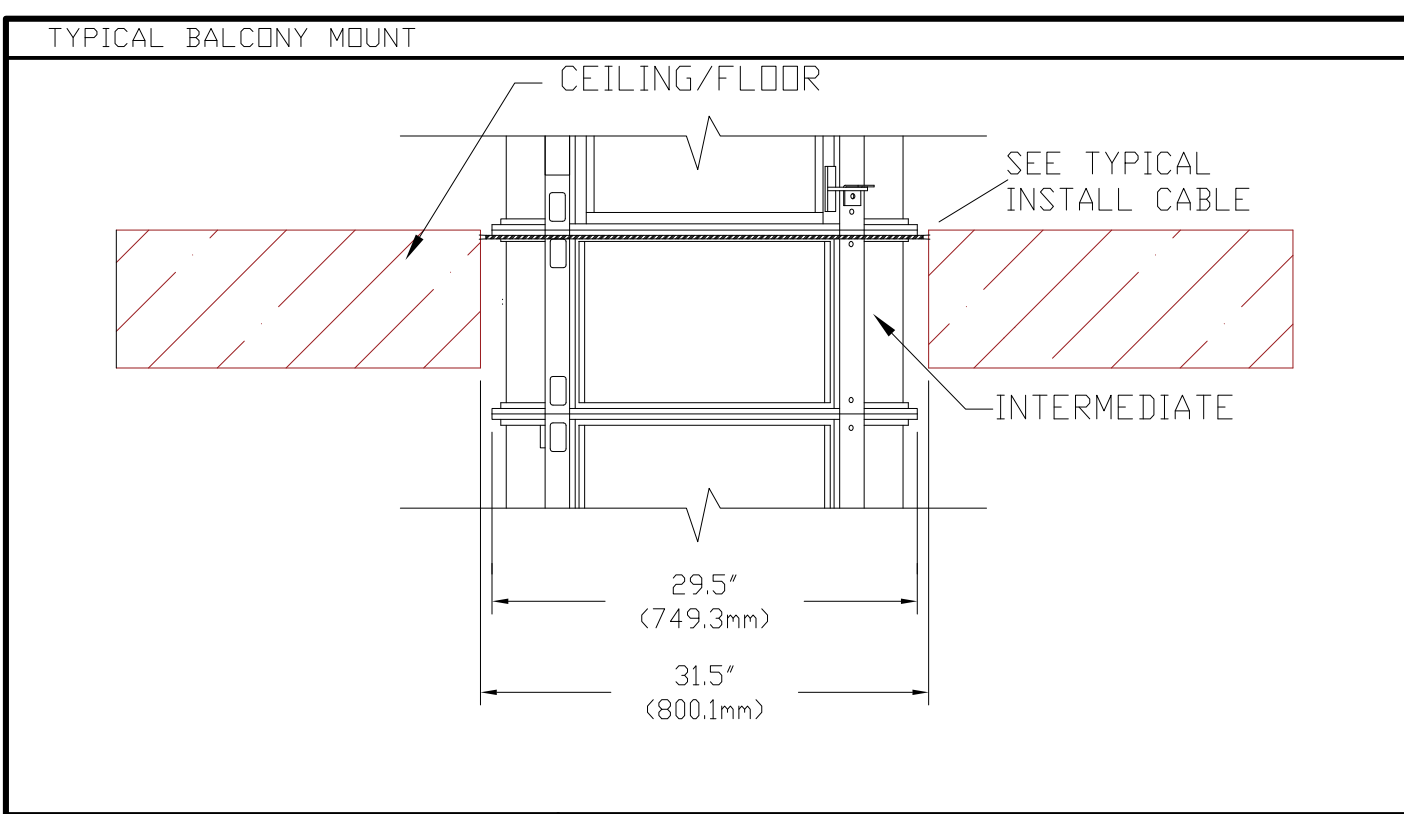
- 220V, 60/50 Hz, 25amp single phase power supply
- 3 turbine motors located in pump box using a total of 3KW

Cabin:

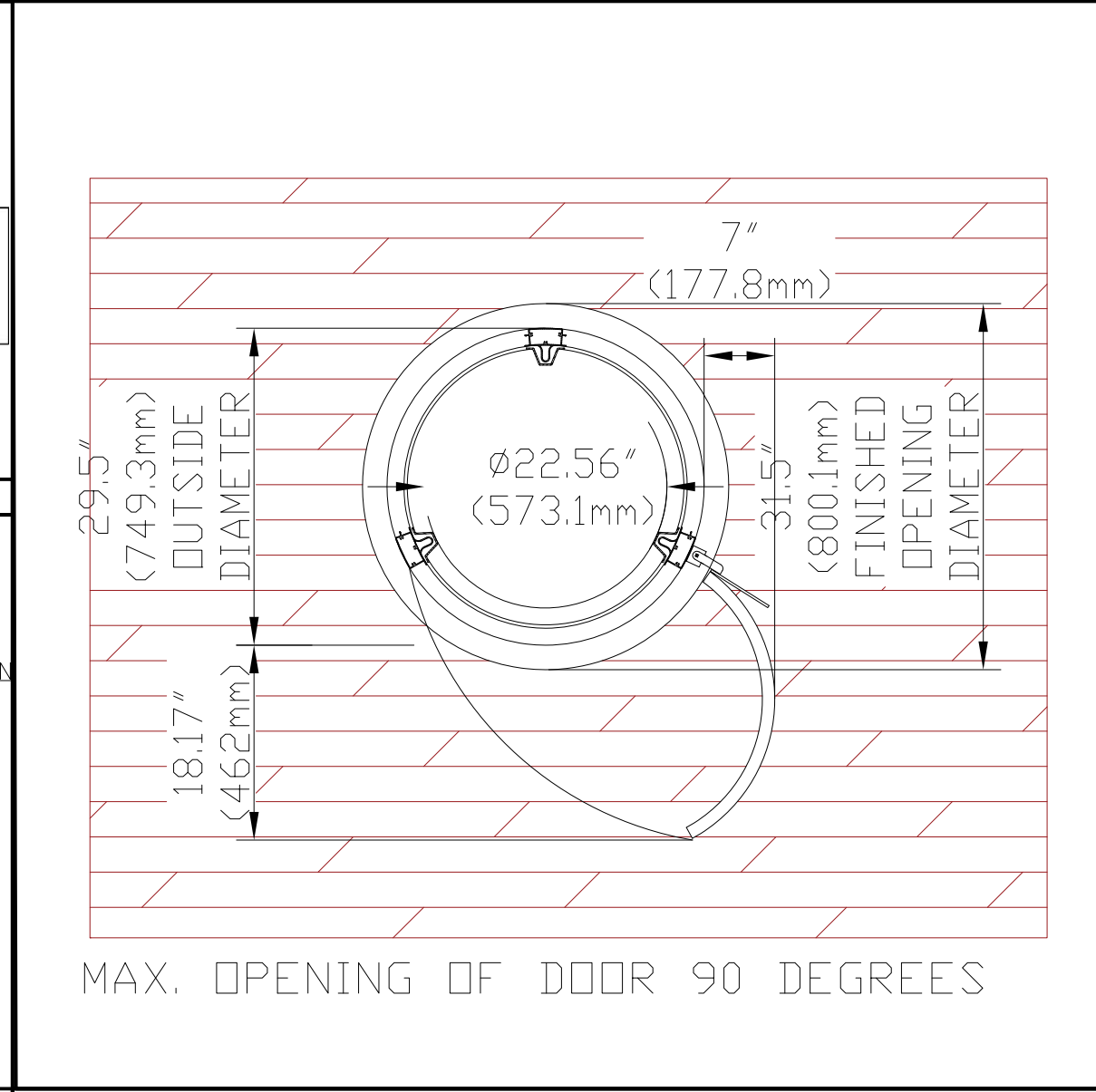
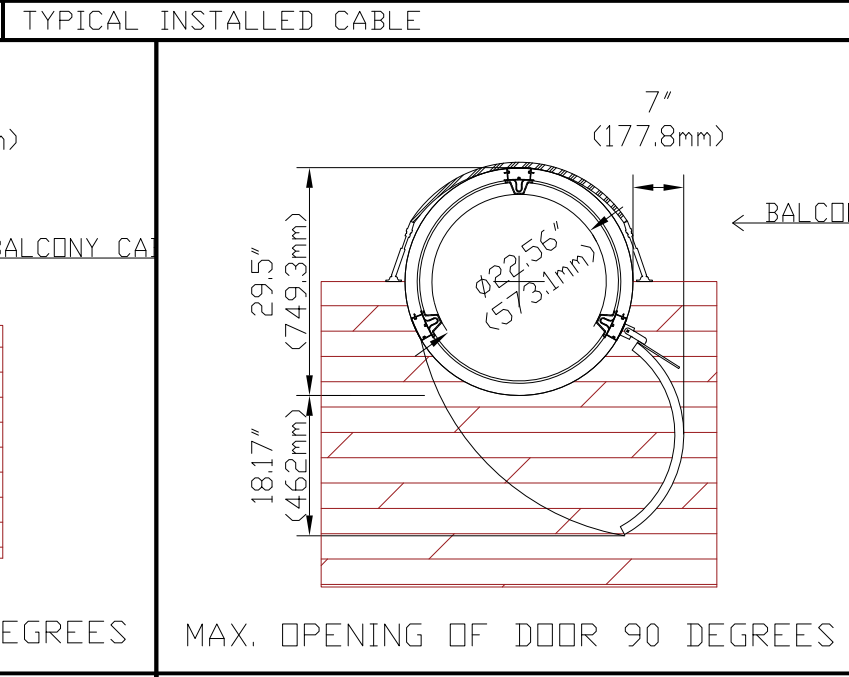
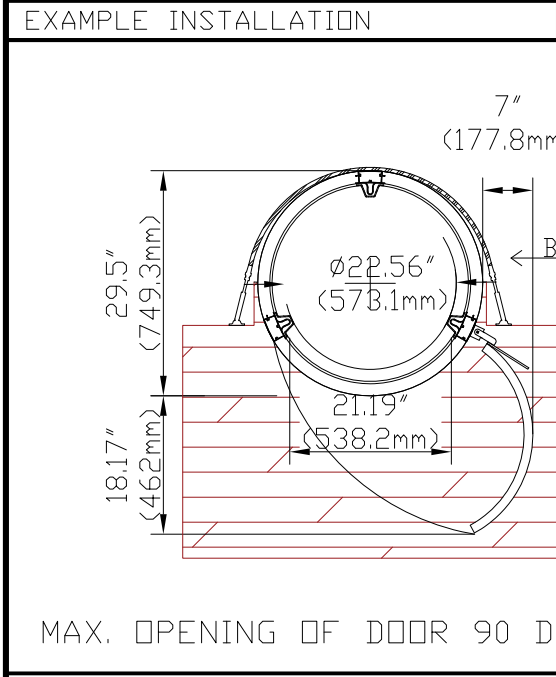
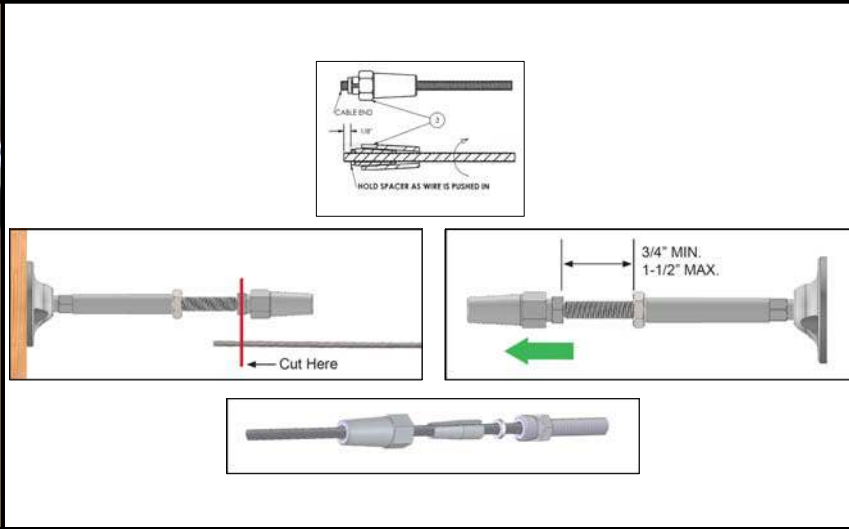
- Entrance width opening: 20" (508mm)
- Internal cabin height: 79" (2007mm)
- Internal cabin diameter:
 - Between columns: 20" (508mm)
 - Without columns: 26" (661mm)
- Automatic LED lighting and cabin fan
- Door openings: same side (in-line) only.
 - All doors are hinged on top left, with door swing to the left, from inside the cabin.
 - Door Height: 80" (2,032mm)
 - Door Height w/ Door closer: 81 3/4" (2,077mm)
 - Each landing level specified will include only one door.
- 24 Volt electrical circuits with all controls in cabin
- Push button call controls with precise leveling at each landing.

Safety:

- Automatic descent to ground level at safety speed in the event of a power failure.
- Mechanical emergency brakes within two inches of freefall in vacuum loss or catastrophic failure.
- Electromechanical interlocks at each landing
- Alarm system and telephone (optional)



NOTES



REVISION AND PRINT RECORD

REV. BY	DESCRIPTION	DATE	FOR
R.L	INITIAL LAYOUT	12/18/19	MARKET

TOLERANCES UNLESS OTHERWISE SPECIFIED

1" (1.00)	25.4 MM OR LESS	±1/32 (0.031)	0.793 MM
OVER 1" (1.00)	25.4 MM LESS THAN 12" (12.00)	±1/16" (0.0625)	1.59 MM
OVER 12" (12.00)	304.80 MM LESS THAN 60" (60.00)	±1/8" (1.25)	3.18 MM
OVER 60" (60.00)	1524 MM TO 120' (120.00)	±1/4" (25.0)	6.35 MM

PNEUMATIC

VACUUM ELEVATORS LLC

12602 NW 115th AVE. MEDLEY, FL. 33187
(305) 884-1091 Fax (305) 884-1092

JOB NAME: BALCONY EXAMPLES

LOCATION: 12602 NW 115th AVE. MEDLEY, FL. 33187

SCALE: NTS

DRAWN BY: RYDER LLOYD	FINALS: 12/18/2019
CHECKED BY: J.C.	RELEASED BY:
CUSTOMER#: XX	P.ORDER #: XX