

# The PVE37 (933) Pneumatic Vacuum Elevator



## Standard Features

- No pit, hoist way, or machine room required
- Self-supporting structure
- 35 ft (10.5m) total rise Max<sup>†</sup>
- 30 ft/min (0.15m/s) travelling speed
- Two to Four stops
- External cylinder diameter: 37 inches (933mm)
- Internal cabin diameter: 32 inches (813mm)
- Internal cabin height: 6'7" (79 inches/ 2005mm)
- Entrance way opening: 21 inches (534mm)
- Weight of unit: 1,100 lbs for 2 stop w/ 9' ceilings
- Through Floor or Balcony Mount Landings
- Power Supply: 30 AMP 220VAC
- In-line and 180° door openings
- Aluminum and polycarbonate cylinder structure
- Automatic interior LED lighting and fan
- Mechanical emergency safety brake system
- One year limited manufacturer warranty
- ASME A17.7 Certified and 2006/42/EC

## Options

- Colors:
  - Standard Dark Gray
  - Light Gray
  - White
  - Black
  - Taupe
- Phone
- Cabin Key Lock
- Foldable Cabin Seat
- Earthquake Brackets



The PVE37 is the first of the pneumatic vacuum elevator models that was introduced to the elevator industry back in 2002. The panoramic home lift measures 37 inches in outside diameter and 32 inches wide on the interior of the cabin. The air driven residential elevator can safely carry two adults or 450 lbs. up to as many as four stops or 35 feet in total rise. For accessibility purposes, you can even opt to have a cabin seat installed for a single rider to sit while being carried up to another floor.

The compact PVE37 home elevator is the perfect option for an existing residence as it does not take up much space but still accommodates all of the desired applications of any residential elevator. Whether it is used for passengers, suitcases, pets, household items, etc., the PVE37 lift serves a number of functions without the consuming footprint and significant construction costs required of a traditional home elevator. In both new construction and retrofit applications, many even choose to feature the vacuum lift in the front entrance of their home as a work of art and conversation piece.

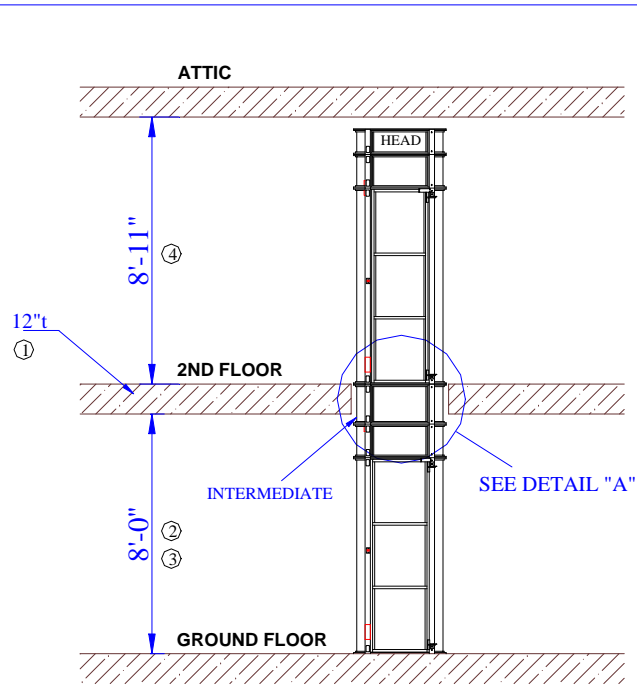
The PVE37 panoramic home elevator runs merely off of a 30 amp/220 volt power supply, which is the same as most washer and dryers. If the power goes out in your home, you will not get stuck in the elevator. The safety system is designed to automatically switch to a slow descent when the power goes out, and mechanical brakes engage if the elevator ever begins to free fall.

One of the great advantages of the air driven home elevator technology is that there is very minimal maintenance required. The only scheduled maintenance per the ASME A17.7 certification is every five years or approximately 15,000 lifts on average, the main seal needs to be replaced. There is a significant cost savings over time if you are to compare this to the regular service required for a traditional residential elevator.

The PVE37 offers in-line (same side) or 180° (opposite side) door openings with one door at each elevator landing. Standing outside of the round elevator and looking at the door, the door opens from left to right (top right hinged). The door width opening is 20 1/2 inches which will accommodate a passenger with a walker.

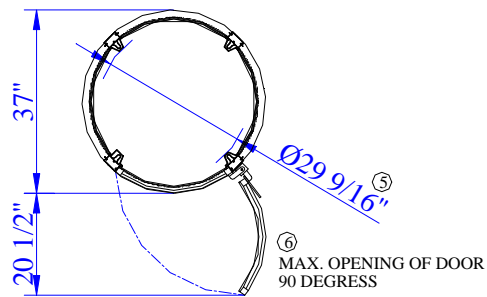
Celebrating its 11th year in production, the PVE37 has paved the way for the full line of pneumatic vacuum elevators. The many features of this PVE37 home lift make it a great option if you want something larger than the PVE30 but do not have enough space or the need for the wheelchair-accessibility PVE52.

### TYPICAL SETUP

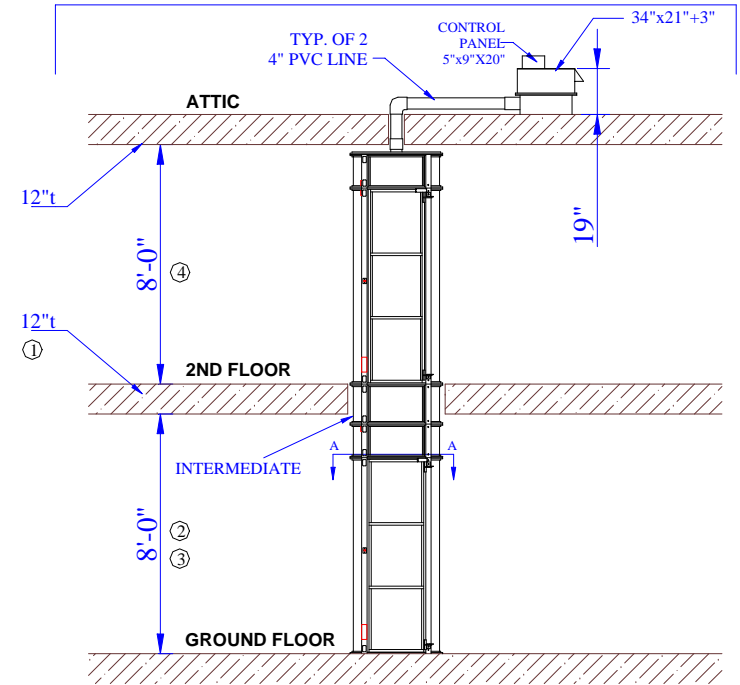


VIEW "A-A"

SCALE 2:1



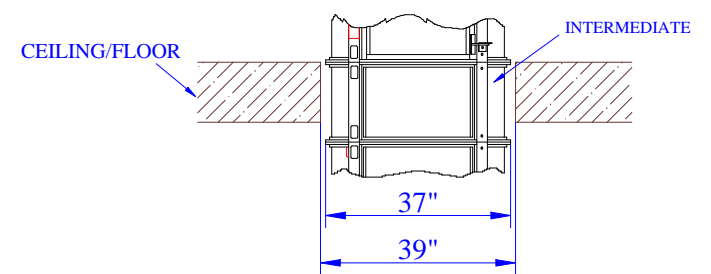
### OPTION: REMOTE LOCATION OF HEAD UNIT



DETAIL "A"

SCALE 2:1


(TYPICAL OF FLOOR PENETRATION)



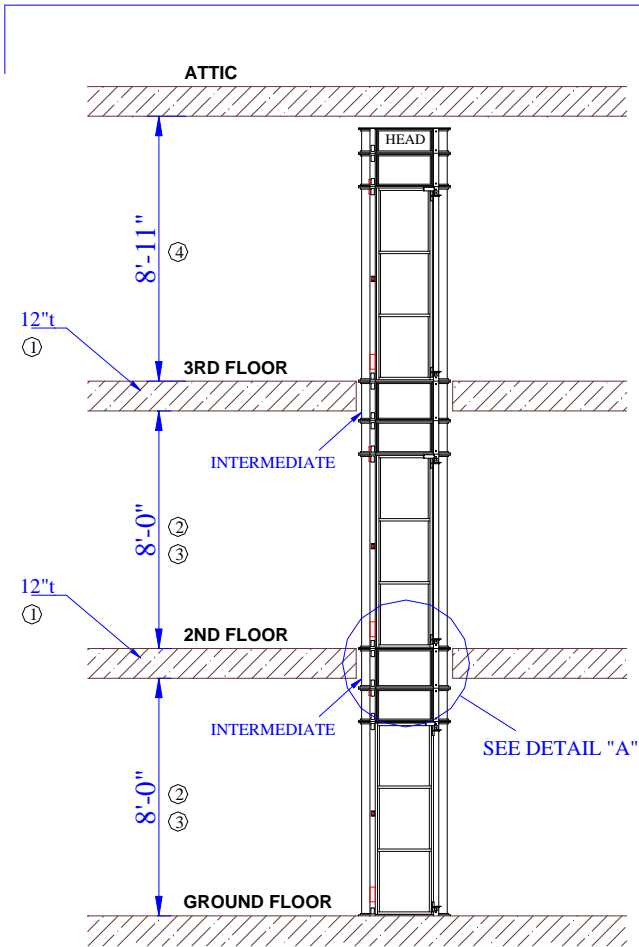
NOTE:

- ① INTERMEDIATE CYLINDER IS CUSTOM MADE AS FLOOR THICKNESS MAY VARY FROM HOME TO HOME.
- ② INTERMEDIATE CYLINDER IS CUSTOM MADE AS ROOM HEIGHT MAY VARY FROM HOME TO HOME.
- ③ MINIMUM ALLOWABLE HEIGHT IS 7'-9"
- ④ MINIMUM ALLOWABLE HEIGHT AS SHOWN FOR THIS TYPE OF INSTALLATION
- ⑤ INTERNAL DIAMETER OF CABIN WITHOUT THE COLUMNS IS 32" AND THE INTERNAL CABIN HEIGHT IS 6'-5"
- ⑥ DOOR WIDTH IS 23 1/2"
- ⑦ MAX. ELEVATOR HEIGHT IS 35'

Information contain herein is the property of Pneumatic Vacuum Elevators LLC. No reproduction or disclosure of this information may be made by the recipient to any person or organization without the written consent of Pneumatic Vacuum Elevators LLC.

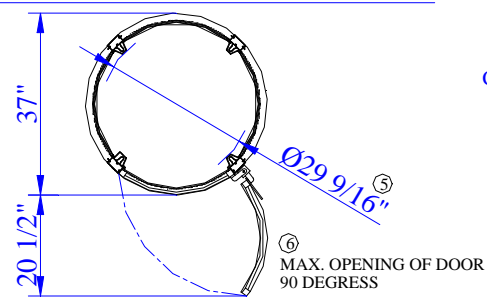
Itemref.	Quantity	Material	Dimentions		Article No./ Reference					
 <b>PNEUMATIC VACUUM ELEVATORS LLC</b>	<b>TYPICAL HOME INSTALLATION FOR A 2STOP ELEVATOR</b>					Designed by	Scale	Drawing No.	Rev	Date
	HS	1:1	D-TYP-H-01	1	07/22/11					

## TYPICAL SETUP



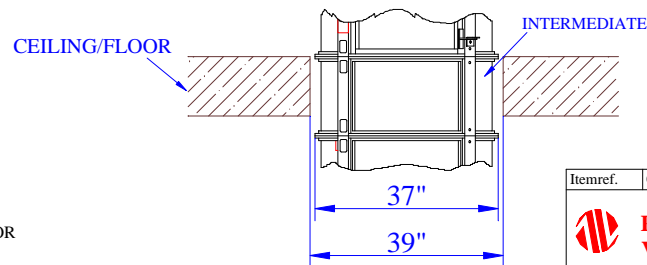
VIEW "A-A"

SCALE 2:1

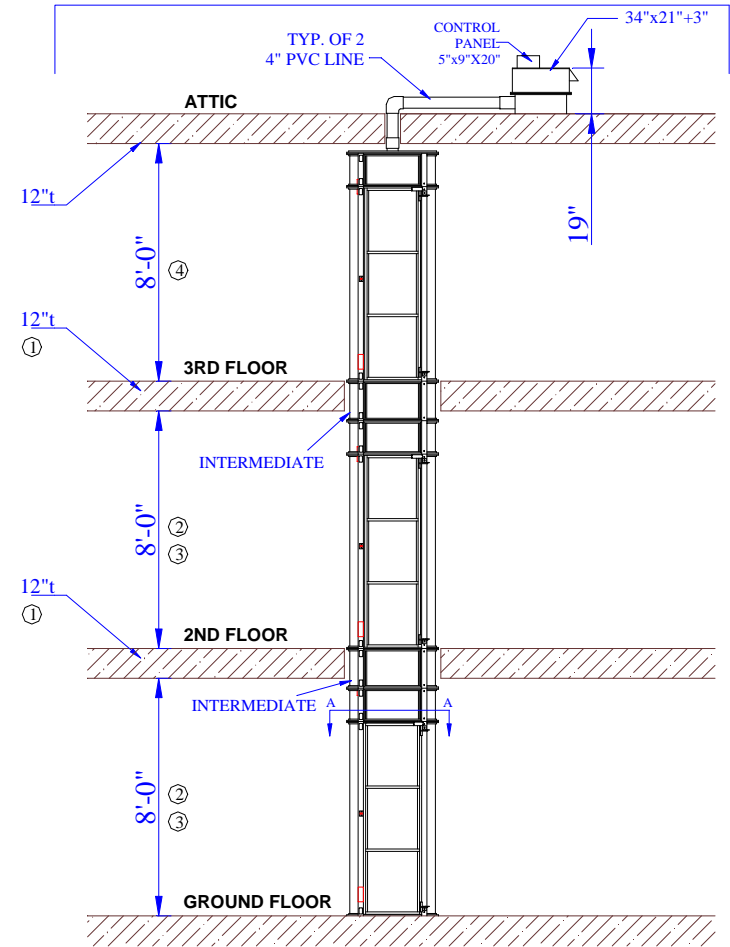


DETAIL "A"

SCALE 2:1  
(TYPICAL OF FLOOR PENETRATION)




## OPTION: REMOTE LOCATION OF HEAD UNIT



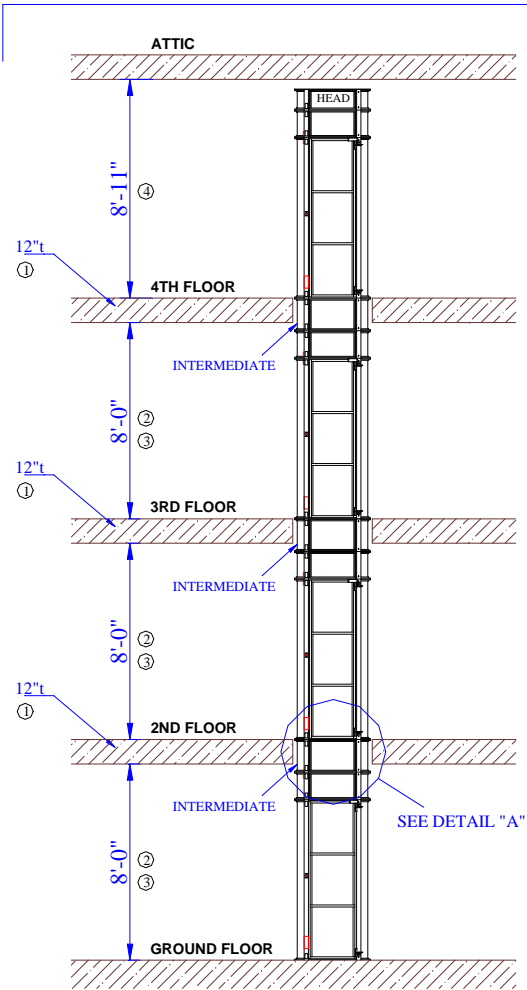
### NOTE:

- ① INTERMEDIATE CYLINDER IS CUSTOM MADE AS FLOOR THICKNESS MAY VARY FROM HOME TO HOME.
- ② INTERMEDIATE CYLINDER IS CUSTOM MADE AS ROOM HEIGHT MAY VARY FROM HOME TO HOME.
- ③ MINIMUM ALLOWABLE HEIGHT IS 7'-9"
- ④ MINIMUM ALLOWABLE HEIGHT AS SHOWN FOR THIS TYPE OF INSTALLATION
- ⑤ INTERNAL DIAMETER OF CABIN WITHOUT THE COLUMNS IS 32" AND THE INTERNAL CABIN HEIGHT IS 6'-5"
- ⑥ DOOR WIDTH IS 23 1/2"
- 7 MAX. ELEVATOR HEIGHT IS 35'

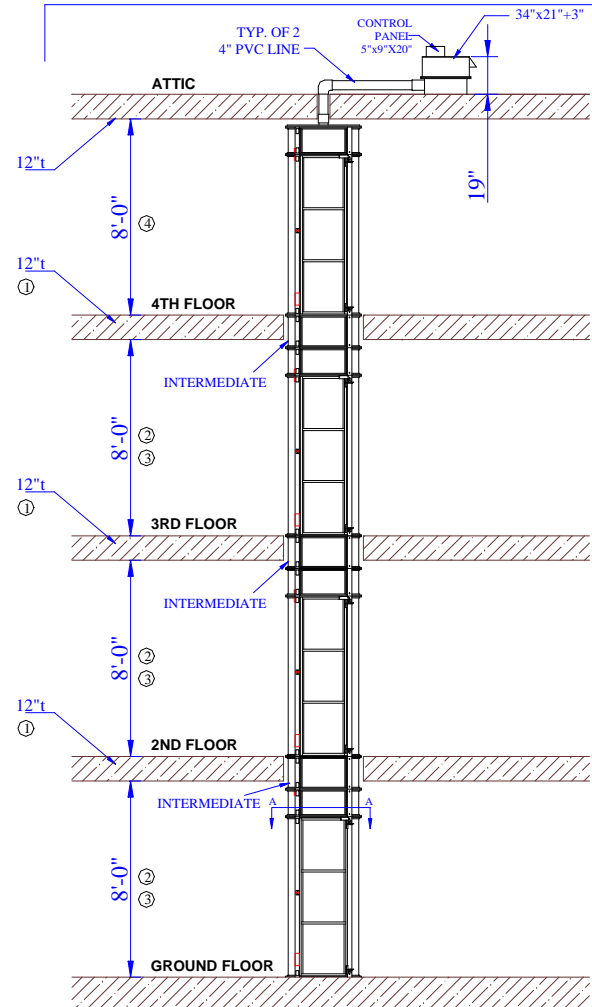
Information contain herein is the property of Pneumatic Vacuum Elevators LLC. No reproduction or disclosure of this information may be made by the recipient to any person or organization without the written consent of Pneumatic Vacuum Elevators LLC.

Itemref.	Quantity	Material	Dimensions	Article No./ Reference				
 <b>PNEUMATIC VACUUM ELEVATORS LLC</b>				<b>TYPICAL HOME INSTALLATION FOR A 3STOP ELEVATOR</b>				
				Designed by HS	Scale 1:1	Drawing No. D-TYP-H-02	Rev 1	Date 07/22/11

### TYPICAL SETUP



### OPTION: REMOTE LOCATION OF HEAD UNIT

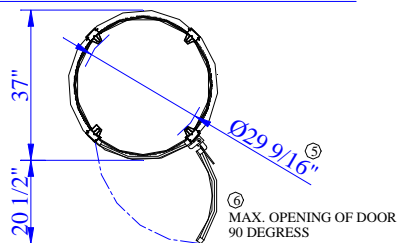


**NOTE:**

- ① INTERMEDIATE CYLINDER IS CUSTOM MADE AS FLOOR THICKNESS MAY VARY FROM HOME TO HOME.
- ② INTERMEDIATE CYLINDER IS CUSTOM MADE AS ROOM HEIGHT MAY VARY FROM HOME TO HOME.
- ③ MINIMUM ALLOWABLE HEIGHT IS 7'-9"
- ④ MINIMUM ALLOWABLE HEIGHT AS SHOWN FOR THIS TYPE OF INSTALLATION
- ⑤ INTERNAL DIAMETER OF CABIN WITHOUT THE COLUMNS IS 32" AND THE INTERNAL CABIN HEIGHT IS 6'-5"
- ⑥ DOOR WIDTH IS 23 1/2"
- 7 MAX. ELEVATOR TRAVEL HEIGHT IS 35'

VIEW "A-A"

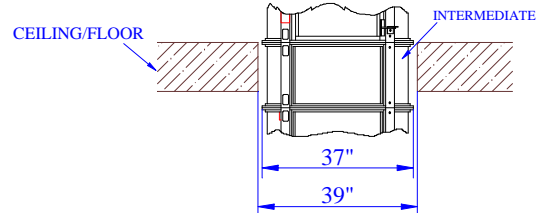
SCALE 2:1



DETAIL "A"

SCALE 2:1

(TYPICAL OF FLOOR PENETRATION)



Information contain herein is the property of Pneumatic Vacuum Elevators LLC. No reproduction or disclosure of this information may be made by the recipient to any person or organization without the written consent of Pneumatic Vacuum Elevators LLC.

Itemref.	Quantity	Material	Dimensions	Article No./ Reference
<b>TYPICAL HOME INSTALLATION FOR A 4STOP ELEVATOR</b>				
<b>PNEUMATIC VACUUM ELEVATORS LLC</b>		Designed by	Scale	Drawing No.
		HS	1:1	D-TYP-H-03
Rev	Date			
1	07/22/11			



# PNEUMATIC VACUUM ELEVATORS LLC

14804 S.W. 136<sup>th</sup> Street, Miami, FL. 33196  
 Phone: 305-235-6707  
 Fax: 305-235-6765

## ELECTRICAL REQUIREMENTS

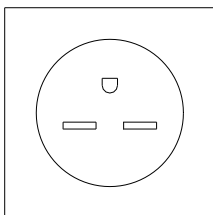
The following are the electrical requirements for a 2, 3, and 4stop elevators, PVE30 & PVE37 series.

- **220VAC (no exceptions 220VAC must be provided, 210 VAC or 230VAC is not acceptable, if installation does not have 220vac on a regular basis, a voltage regulator or transformer must be installed by home owner). Voltage fluctuations are not covered by the warranty.**
- 1 phase
- (L1, L2, Ground)
- 30amp
- Primary disconnect is to be provided by home owner.
- Electrical termination point is at top of elevator. If a split unit is used electrical termination will be on top of head/split system.
- If installing a phone line a phone jack is to be provided near the power supply line, but isolated.
- A 4ft power cord and plug is provided on top of elevator or head/split system for easy of connecting. The provided plug is manufactured by Pass & Seymour or comparable substitute:

Catalog Number	Page (PDF)	Rating A	Rating V	Description	Cord Diameter	NEMA Config. No.
<a href="#">3869</a>	<a href="#">G11</a>	30/50	250	Angled Plug, Black	.56 - 1.1 in.	6-30P/6-50P

- Home owner / electrician needs to provide 220VAC, 1phase, 30amp electrical outlet as shown below (Pass & Seymour or comparable substitute):

220VAC, 1phase  
POWER OUTLET



**Straight Blade Devices**

**Power Outlet Receptacles & Plugs**

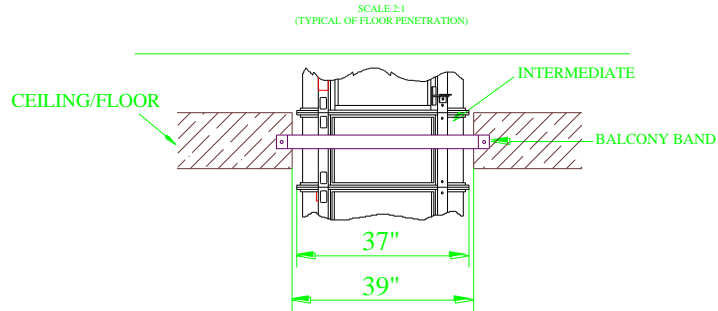
20, 30, 50, & 60A

**Pass & Seymour**  
legrand

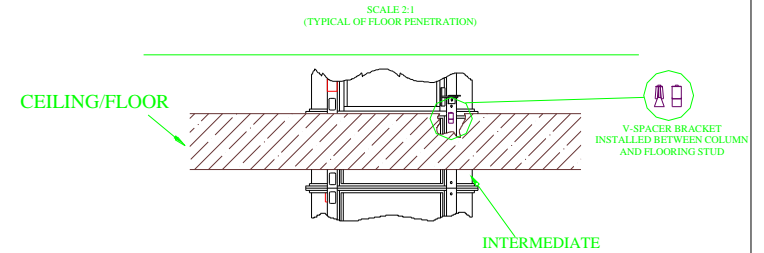
Catalog Number	Rating A.	Rating V.	Usage	Receptacle/Plug Config and NEMA No.	Description	AL/CU
<a href="#">3801</a>	30	250		6-30	Flush Receptacle	•

It is strongly recommended that the electrician contact PVE before starting work.

### TYPICAL BALCONY MOUNT



### TYPICAL THROUGH FLOOR MOUNT



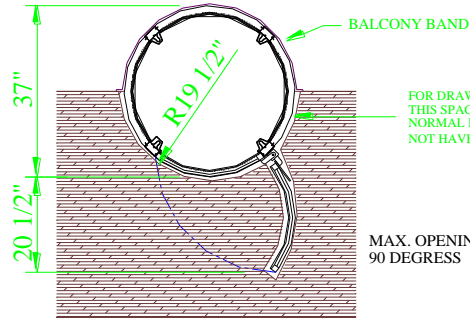
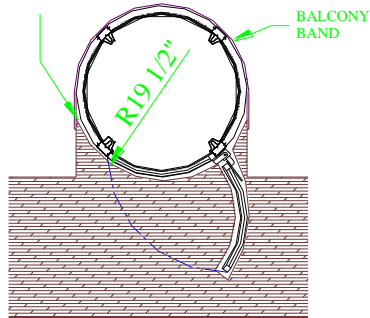
#### MOUNT SAMPLE 1

SCALE 2:1

#### MOUNT SAMPLE 2

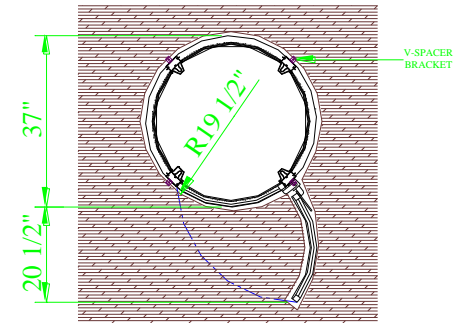
SCALE 2:1

FOR DRAWING PURPOSE  
THIS SPACE HAS BEEN ADDED  
NORMAL INSTALLATION WILL  
NOT HAVE SPACING




FOR DRAWING PURPOSE  
THIS SPACE HAS BEEN ADDED  
NORMAL INSTALLATION WILL  
NOT HAVE SPACING

MAX. OPENING OF DOOR  
90 DEGRESS



Information contain herein is the property of  
Pneumatic Vacuum Elevators LLC. No reproduction  
or disclosure of this information may be made by the  
recipient to any person or organization without the  
written consent of Pneumatic Vacuum Elevators LLC.

Itemref.	Quantity	Material	Dimentions		Article No./ Reference
 <b>PNEUMATIC VACUUM ELEVATORS LLC</b>			<b>TYPICAL HOME INSTALLATION MOUNTING OPTIONS</b>		
			Designed by HS	Scale 1:1	Drawing No. D-TYP-H-04